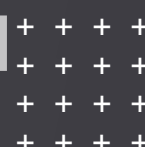


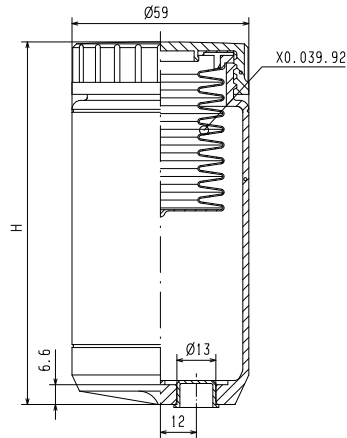
# Master Cylinders & Reservoirs



# 4



++++  
 ++++ **P/N 10.8687.10/13**  
 ++++ **STANDARD RESERVOIRS**  
 ++++



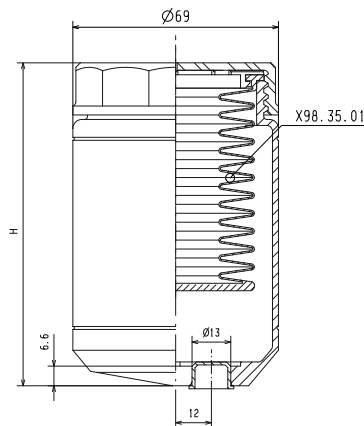
	Nipple kit	Alluminium	R	10.8687.22
	Nipple kit	Alluminium	R	10.8687.26

Part number	Volume[cm <sup>3</sup> ]	H
R 10.8687.10	83	75.5
R 10.8687.11	163	110.5
R 10.8687.12	180	120.5
R 10.8687.13	238	148.5

	Nipple		Nut		Washer		O-ring

4

++++  
 ++++ **P/N 10.8687.14/15**  
 ++++ **GRAN TOURING RESERVOIRS**  
 ++++



	Nipple kit	Alluminium	R	10.8687.22
	Nipple kit	Alluminium	R	10.8687.26

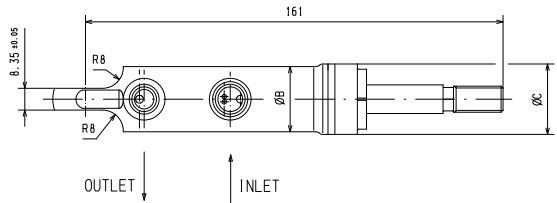
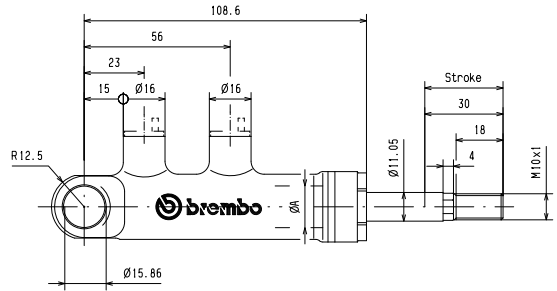
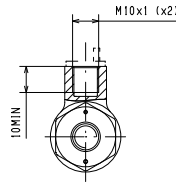
Part number	Volume[cm <sup>3</sup> ]	H
R 10.8687.14	199	108.4
R 10.8687.15	304	144.5

	Nipple		Nut		Washer		O-ring

++++  
 ++++  
 ++++  
 ++++

++++  
 ++++  
 ++++  
 ++++

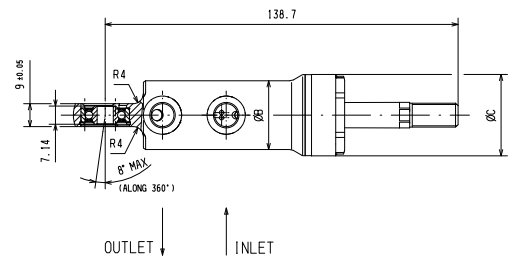
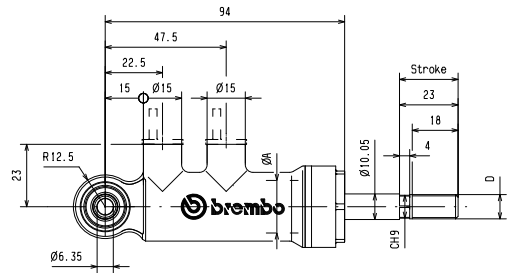
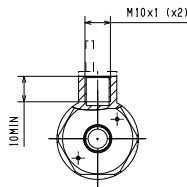
# P/N X97.54.11/16 FRONT PIVOT FIXING MASTER CYLINDER



ØA	ØB	ØC		Part Number
15	25	27	X	97.54.11
16	25	27	X	97.54.12
17	25	30	X	97.54.13
18	25	30	X	97.54.14
19.05	25	30	X	97.54.15
20.64	26	30	X	97.54.16

4

# P/N XA2.L2.A7/F7 – XA3.G1.32/45 FRONT PIVOT FIXING WITH VERTICAL BEARING MASTER CYLINDER

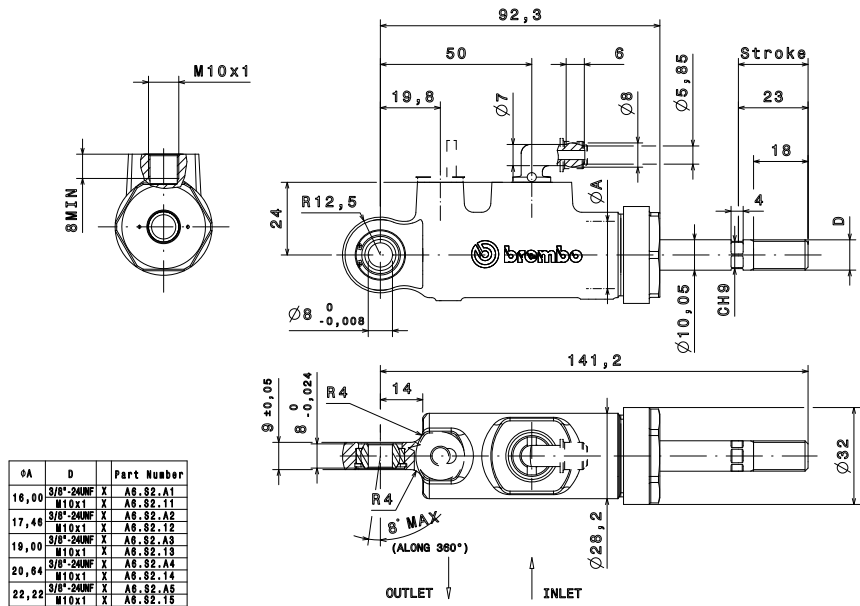


ØA	ØB	ØC	D	Part Number
16.00	25	30	3/8"-24UNF	X A3.G1.42
			M10x1	X A3.G1.32
17.46	25	30	3/8"-24UNF	X A3.G1.44
			M10x1	X A3.G1.34
19.00	25	30	3/8"-24UNF	X A3.G1.45
			M10x1	X A1.G1.35
20.64	27	32	3/8"-24UNF	X A2.L2.A7
			M10x1	X A2.L2.F6
22.22	27	32	3/8"-24UNF	X A2.L2.A8
			M10x1	X A2.L2.F7

++++  
 ++++  
 ++++  
 ++++

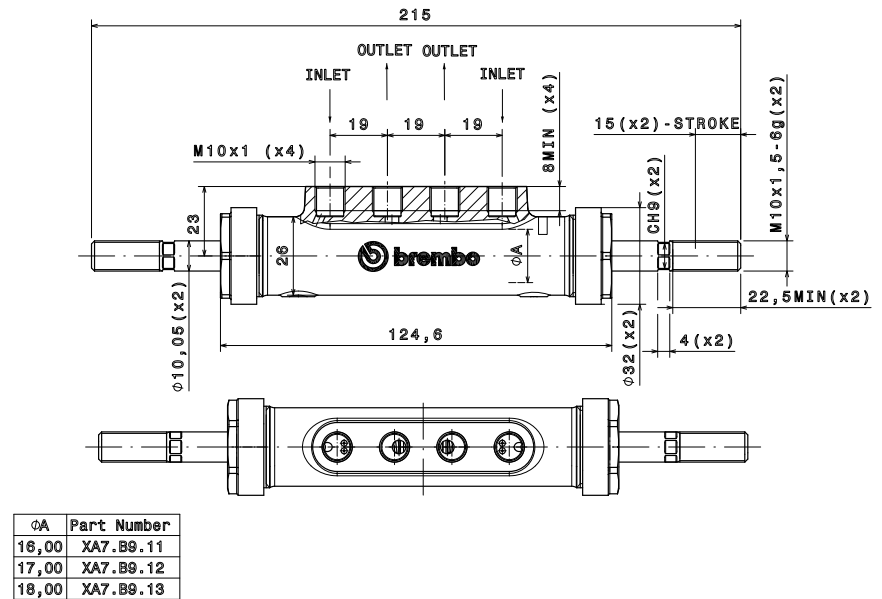
++++  
 ++++  
 ++++  
 ++++

## XA6.S2.11/15 - XA6.S2.A1/A5 FORGED MASTER CYLINDER



4

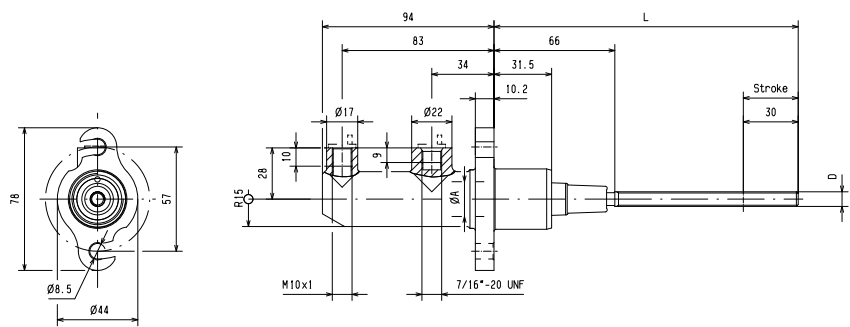
## P/N XA7.B9.11/13 TWIN MASTER CYLINDER FOR HANDBRAKE



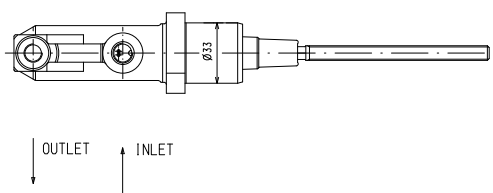
++++  
 ++++  
 ++++  
 ++++

# P/N 10.9243.54/96

## TWO BOLT FIXING MASTER CYLINDER



ØA	D	L	PUSHED MATERIAL	PART NUMBER
17.46	M8x1.25	117	STEEL	R 10.9243.54
	5/16"-24UNF	166	STEEL	R 10.9243.55
19.05	M8x1.25	117	TITANIUM	R 10.9243.56
	5/16"-24UNF	166	STEEL	R 10.9243.74
20.64	M8x1.25	117	TITANIUM	R 10.9243.75
	5/16"-24UNF	166	STEEL	R 10.9243.76
22.22	M8x1.25	117	STEEL	R 10.9243.84
	5/16"-24UNF	166	STEEL	R 10.9243.85
22.22	M8x1.25	117	TITANIUM	R 10.9243.86
	5/16"-24UNF	166	STEEL	R 10.9243.94
22.22	M8x1.25	117	STEEL	R 10.9243.95
	5/16"-24UNF	166	TITANIUM	R 10.9243.96

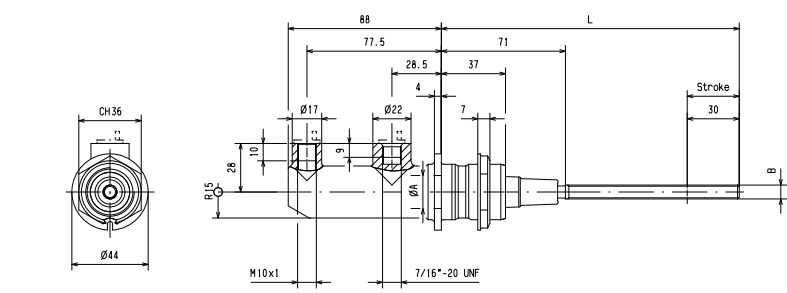


+++  
+++  
+++  
+++

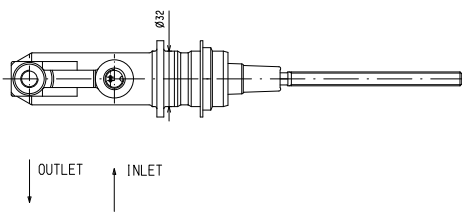
4

# P/N 10.6815.56/97

## SINGLE NUT FIXING MASTER CYLINDER



ØA	B	L	Part Number
17.46	5/16" 24UNF	171	R 10.6815.57
17.46	M10x1	122	R 10.6815.56
19.05	5/16" 24UNF	171	R 10.6815.77
19.05	M10x1	122	R 10.6815.76
20.64	5/16" 24UNF	171	R 10.6815.87
20.64	M10x1	122	R 10.6815.86
22.22	5/16" 24UNF	171	R 10.6815.97
22.22	M10x1	122	R 10.6815.96



+++  
+++  
+++  
+++